

NOTES - 01/03/20

- This drawing is sized to be printed on a 24"x36" piece of paper.
- Horizontal pipes contain Underhang and Overhang units. Please see notes on plot as well as detail box for further info.
- Movers on 2 PIPE should be hung on taildowns.
- When cabling please leave slack for units to shift during focus. Units may need to slide onstage or offstage, or possible move from HI CAT to LOW CAT.
- For focus, please have extra Source4 Barrels, irises, barn doors, and other accessories standing by as well as extra frost (R132, R119, R114).
- DS Electric will not be used. US Electric trim is its maximum height.
- See Practical Detail box for all set practicals. Please note there 9 set-mounted flash bulbs and 2 practicalable lamps (need to be in wireless dimmers).
- All intelligent accessories (XIs, etc) should be patched into the same channel as the fixture they are on.
- If 2-fering options are needed, please contact designer. Please leave extra circuits available at each position for future addy/moves.

Changeover Notes:

- Strike DS Electric (1 @ 6" Fresnel)
- Re-space/Re-Hang US Electric
- Move VLX units from Horizontals to Grid
- Adjust VL 1000 Spacing as drawn
- Add Cyc Ground Row
- Leave Footlights in place
- Make other adjustments as indicated.
- Red Unit = Strike unit
- Grey Unit = Move Unit
- Unit with Green Box = Add Unit

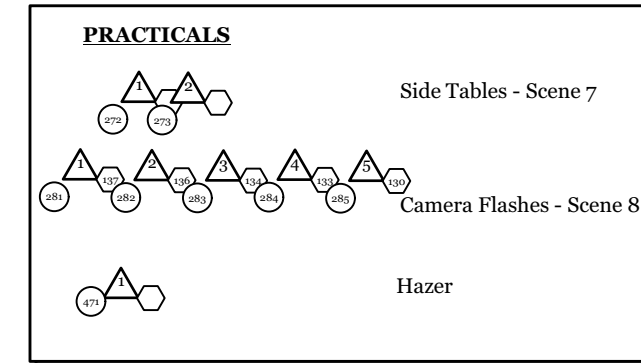
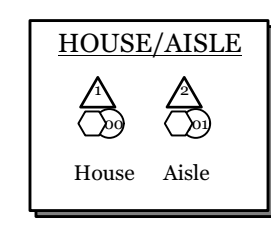
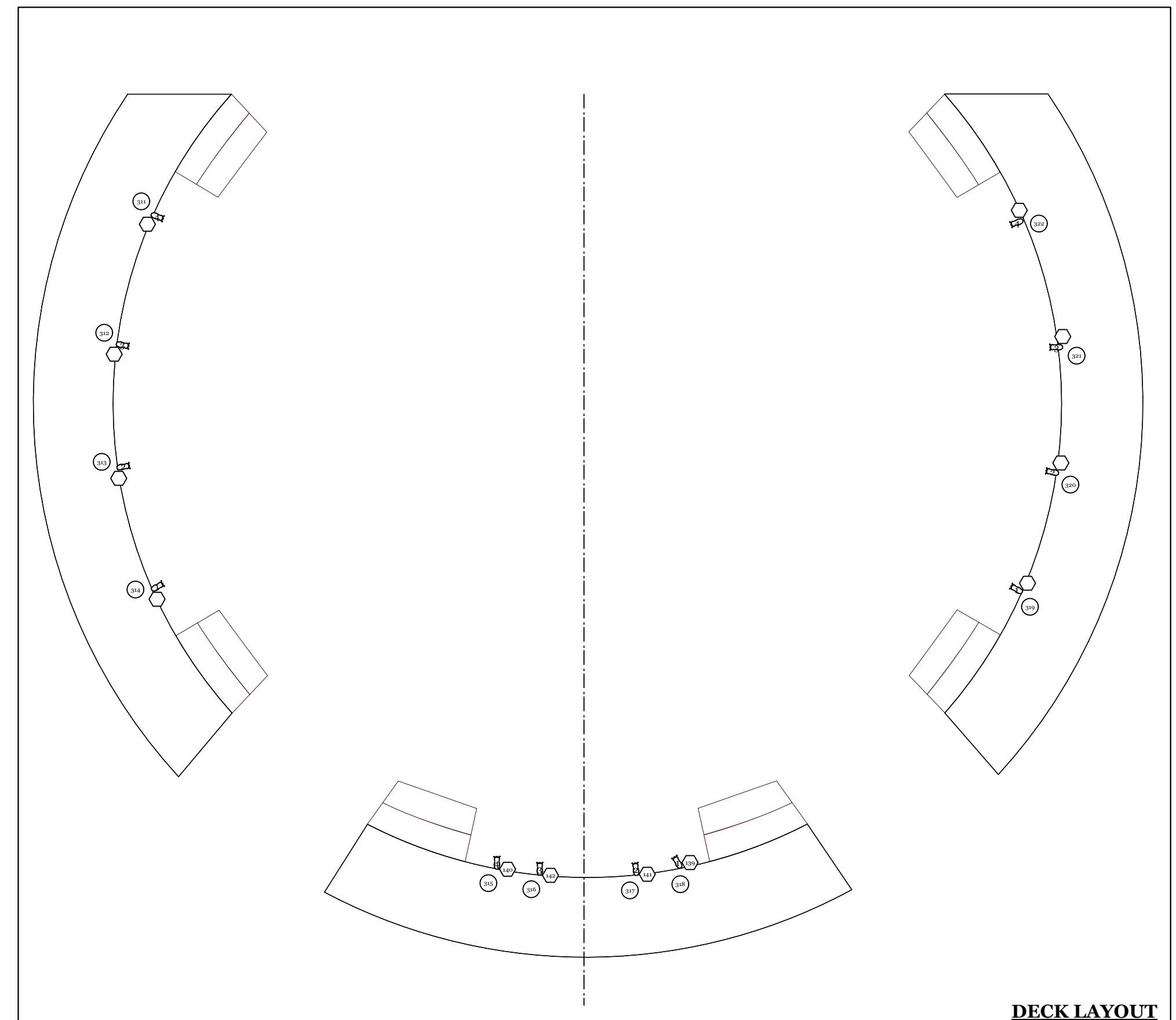
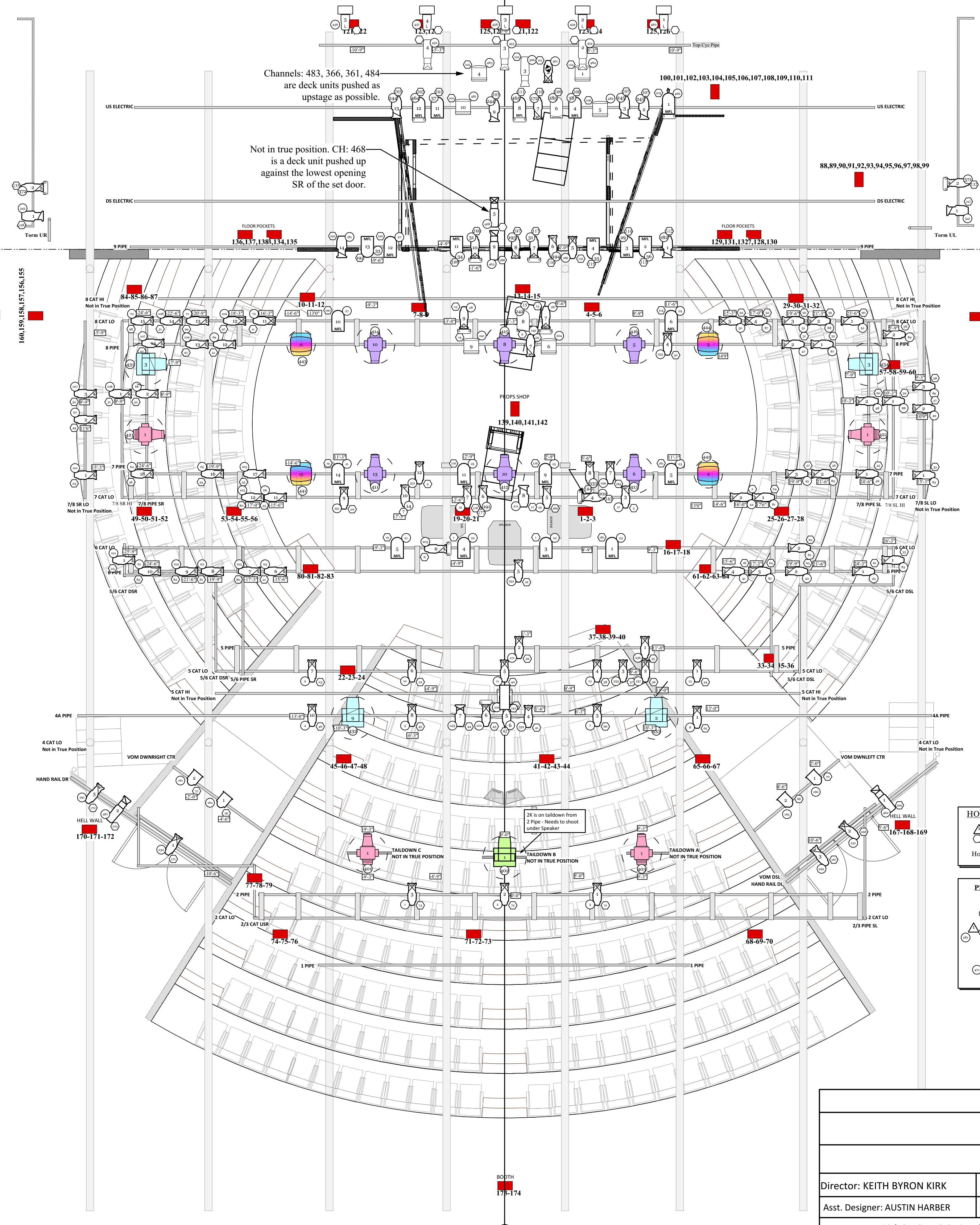
- Please don't hesitate to contact designer Mike Jarett with any questions, thoughts, comments concerns: mbjarett123@yahoo.com or 804-241-3842 (cell)

NOTES - 02/9/20

- The Scrim has been cut so all cyc cabling are exposed. So they need to be nice, neat, clean, and organized.
- Please don't hesitate to contact designer Mike Jarett with any questions, thoughts, comments concerns: mbjarett123@yahoo.com or 804-241-3842 (cell)

LINESET SCHEDULE

SCRM CYC	54	132"
US ELECTRIC	2	97"
DS ELECTRIC	1	133"
DS MASKING PLASTERLINE	3	07.0"



Instrument Key

- VLX WASH
- VL 1000 TI
- VL 2500
- VL 1100 TTD
- VL 1000 TSD
- HAZER
- Lustr 2 with Cyc Adapter
- Strand 6" Fresnel 750w
- PAR 64 MEL 1kw
- PAR 64 NSP 1kw
- 19deg Source4 750w
- 26deg Source4 750w
- 50deg Source4 750w
- Strand 6x12 1kW
- Strand 6x16 1kW
- 26deg Source4 Lustr S2
- Set Mount
- Studio 2k 8" Fresnel

THEATREVCU – HODGES THEATER		
MACHINAL		
LIGHT PLOT		
Director: KEITH BYRON KIRK	Set Designer: SCOTT BRADLEY	Lighting Designer: MICHAEL JARETT
Asst. Designer: AUSTIN HARBER	Master Electrician: SREYPECH AN	AME: DAKOTA CARTER
Lighting Sup: C. DeAngels/W. Corey		Moving Light Tech: HANNAH BECKNER
SCALE - 1'4" = 1'-0"		REV. DATE - 02/11/2020 - REV 13